



# BLACK LAGOON



Identification	Classification	Abundance	Description
<i>Asterionella</i> sp.	Bacillariophyta—Diatoms	200 Cells per ml - Low	Colonial Diatom.
<i>Anabaena</i> sp.	Cyanobacteria—Bluegreen algae	< 100 Cells per ml - Very Low	Colonial Blue Green Algae
<i>Microcystis</i> sp.	Cyanobacteria—Bluegreen algae	250 Cells per ml - Low	Colonial Blue Green Algae

**Site Name**  
High Crest Lake

**Address**  
West Milford, NJ  
07840

**Sample Date**  
10-6-23  
10:30 am

## Site Details

Area: 39.2 Acre

Average Depth: 8ft

Temp: 65°F

Secchi Depth: 3ft

Weather: Light Rain

Notes:

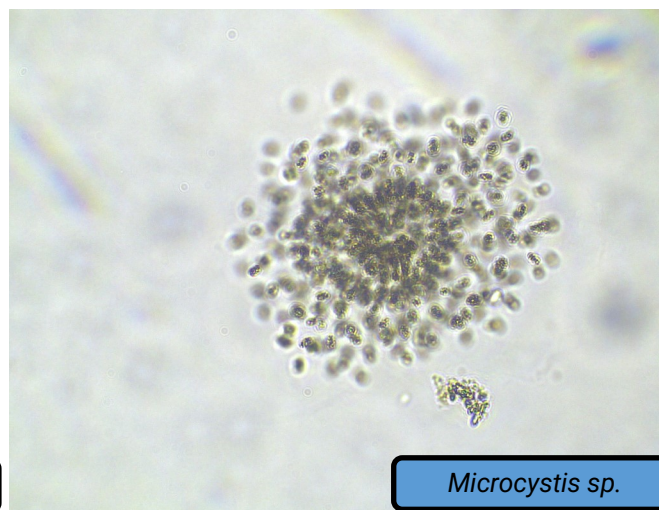
- Very low algae counts overall.
- Potential HAB producing algae Identified.
- Cell counts well within NJDEP guidelines.
- No immediate action recommended.

**BLACK LAGOON**  
1-888-243-0891

56 U.S Route 130 S  
Yardville, NJ 08620



*Anabaena* sp.



*Microcystis* sp.



*Asterionella* sp.